

3906

CARDI-BLAZER - COATIGAN

TANIA

Une coupe blazer relaxe non doublé qui se porte comme un cardigan. Poches dans les découpes diagonales et col enveloppant. Très versatile, il peut être fait dans un lainage, un tricot épais ou dans du lin. *

28

tailles - sizes

Open-front, relaxed-fit unlined blazer that can be worn as a cardigan. Pockets in the diagonal seaming, special notched collar that lays flat against the neck. Very versatile, it can be made in a wool blend, a structured knit or linen.**

MESURES DU CORPS (FILLES) - BODY MEASUREMENTS (GIRLS)

Âge approximatif - Approximate age	2	3	4	5	6	7	8	9	10	11	12	13	
Tailles européennes - European sizes	92	98	104	112	119	127	135	142	146	150	152	155	
TAILLE JALIE - JALIE SIZES	F	G	H	I	J	K	L	M	N	O	P	Q	
	1 POITRINE* BUST**	21"	22"	23"	24"	25"	26"	27"	28"	29"	30"	31"	32"
		53 cm	56 cm	58 cm	61 cm	64 cm	66 cm	69 cm	71 cm	74 cm	76 cm	79 cm	81 cm
	2 TOUR DE TAILLE NATURAL WAIST	20"	20 1/2"	21"	21 1/2"	22"	22 1/2"	23"	23 3/4"	24 1/2"	25 1/4"	25 3/4"	26 1/2"
		51 cm	52 cm	53 cm	55 cm	56 cm	57 cm	58 cm	60 cm	62 cm	64 cm	66 cm	67 cm
3 TOUR DES HANCHES FULL HIPS	22"	23"	24"	25"	26"	27"	28"	29 1/2"	30 1/2"	32"	33"	34 1/2"	
	56 cm	58 cm	61 cm	64 cm	66 cm	69 cm	71 cm	74 cm	78 cm	81 cm	84 cm	87 cm	
4 TRONC (DEVANT+DOS) TORSO (FRONT+BACK)	35"	37"	39"	41"	43"	45"	47"	48 3/4"	50 1/2"	52"	53 3/4"	55 1/2"	
	89 cm	94 cm	99 cm	104 cm	109 cm	114 cm	119 cm	123 cm	128 cm	132 cm	137 cm	141 cm	

TISSU REQUIS - YARDAGE

Lainage moyen et souple, molleton (coton ouaté), ponte di roma (jersey romanite) ou un tissé style lin pour un blazer d'été.		45"	1 3/4 yd	1 3/4 yd	1 3/4 yd	1 3/4 yd	2 yd	2 yd	2 1/4 yd	2 1/4 yd	2 1/4 yd	2 1/4 yd	2 3/4 yd	2 3/4 yd
		115 cm	1.45 m	1.50 m	1.55 m	1.60 m	1.65 m	1.80 m	1.85 m	1.90 m	1.95 m	2.05 m	2.35 m	2.45 m
Wool blend, heavy sweater knit, stable knit like ponte di roma or a woven (linen works well) for a summer blazer.		57"	1 1/4 yd	1 1/4 yd	1 1/4 yd	1 1/4 yd	1 1/2 yd	1 1/2 yd	1 1/2 yd	1 1/2 yd	1 3/4 yd	1 3/4 yd	1 3/4 yd	2 yd
		145 cm	0.95 m	1.00 m	1.05 m	1.10 m	1.20 m	1.25 m	1.30 m	1.35 m	1.40 m	1.45 m	1.50 m	1.65 m

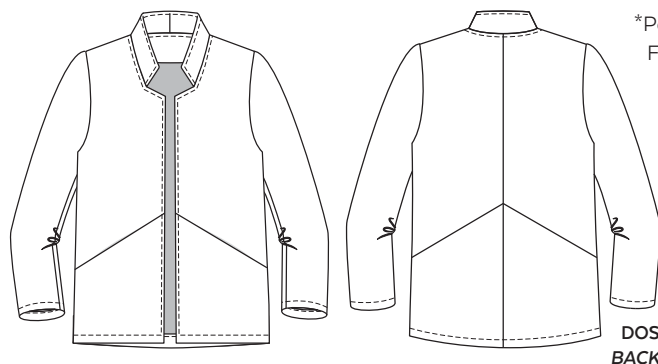
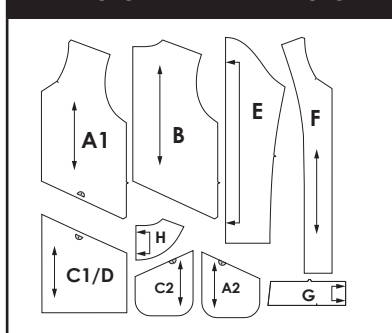
MESURES DU CORPS (FEMMES) - BODY MEASUREMENTS (WOMEN)

Taille US APPROX. US size	2	4	6	8	10	12	14	16	18	20	22	24				
Prêt-à-porter APPROX. RTW size	XS	S			M		L		XL		2XL					
Tailles euro - European sizes	34	36	38	40	42	44	46	48	50	52	54	56				
TAILLE JALIE - JALIE SIZES	R	S	T	U	V	W	X	Y	Z	AA	BB	CC	DD	EE	FF	GG
1 POITRINE* BUST**	33"	34"	35"	36"	37"	38"	39"	40"	41 1/2"	42 3/4"	44"	45 1/2"	46 3/4"	48 1/4"	49 1/2"	51"
	84 cm	86 cm	89 cm	91 cm	94 cm	96 cm	99 cm	102 cm	106 cm	109 cm	112 cm	116 cm	119 cm	123 cm	126 cm	130 cm
2 TOUR DE TAILLE NATURAL WAIST	27"	28"	29"	30"	31"	32"	33"	34"	35 1/4"	36 1/2"	37 3/4"	39"	40 1/4"	41 1/2"	42 3/4"	44"
	69 cm	71 cm	74 cm	76 cm	78 cm	81 cm	84 cm	86 cm	89 cm	93 cm	96 cm	99 cm	102 cm	105 cm	109 cm	112 cm
3 TOUR DES HANCHES FULL HIPS	36"	37"	38"	39"	40"	41"	42"	43"	44 1/2"	45 3/4"	47"	48 1/2"	49 3/4"	51 1/4"	52 3/4"	54"
	91 cm	94 cm	96 cm	99 cm	102 cm	104 cm	106 cm	109 cm	113 cm	116 cm	120 cm	123 cm	126 cm	130 cm	134 cm	137 cm
4 TRONC (DEVANT+DOS) TORSO (FRONT+BACK)	57 1/4"	59"	59 1/2"	60"	60 1/2"	61"	61 1/2"	62"	62 3/4"	63 3/4"	64 1/4"	65 1/2"	66 1/4"	67 1/4"	68 1/4"	69"
	145 cm	150 cm	152 cm	155 cm	157 cm	160 cm	161 cm	159 cm	161 cm	163 cm	165 cm	167 cm	169 cm	171 cm	173 cm	175 cm

TISSU REQUIS - YARDAGE

	45"	2 3/4 yd	3 yd	3 yd	3 yd	3 yd	3 yd	3 1/4 yd	3 1/4 yd	3 1/4 yd	3 1/4 yd	3 1/4 yd	3 1/4 yd	3 1/4 yd	3 1/4 yd	3 1/4 yd	
	115 cm	2.50 m	2.55 m	2.60 m	2.65 m	2.70 m	2.70 m	2.75 m	2.75 m	2.75 m	2.85 m	2.85 m	2.85 m	2.90 m	2.90 m	2.95 m	2.95 m
	57"	2 yd	2 1/4 yd	2 1/4 yd	2 1/4 yd	2 1/4 yd	2 1/4 yd	2 1/2 yd	2 3/4 yd	2 3/4 yd	2 3/4 yd	2 3/4 yd	2 3/4 yd	2 3/4 yd	2 3/4 yd	3 yd	3 1/4 yd
	145 cm	1.80 m	1.95 m	2.00 m	2.00 m	2.00 m	2.00 m	2.20 m	2.35 m	2.45 m	2.45 m	2.45 m	2.45 m	2.45 m	2.45 m	2.70 m	2.75 m

PIÈCES - PATTERN PIECES



*Pour un vêtement ample, mesurez AU PLUS FORT de la poitrine. Pour un vêtement plus ajusté aux épaules et manche, mesurez AU-DESSUS de la poitrine.

**For a loose/relaxed fit, go with your FULL BUST measurement. If you want it more fitted at the shoulder / sleeve, use your UPPER BUST measurement

MERCERIE NOTIONS

ENTOILAGE THERMOCOILLANT FUSIBLE INTERFACING

F - Q	R - GG
30"	36"
75 cm	90 cm

PRÊT À COUDRE // READY TO SEW
ressources de couture (1 cm / 3/8") incluses dans le patron
1 cm / 3/8" seam allowances included in the pattern



6003906



© 2019 LES PATRONS JALIE INC.
www.jalie.com
IMPRIMÉ AU CANADA / PRINTED IN CANADA