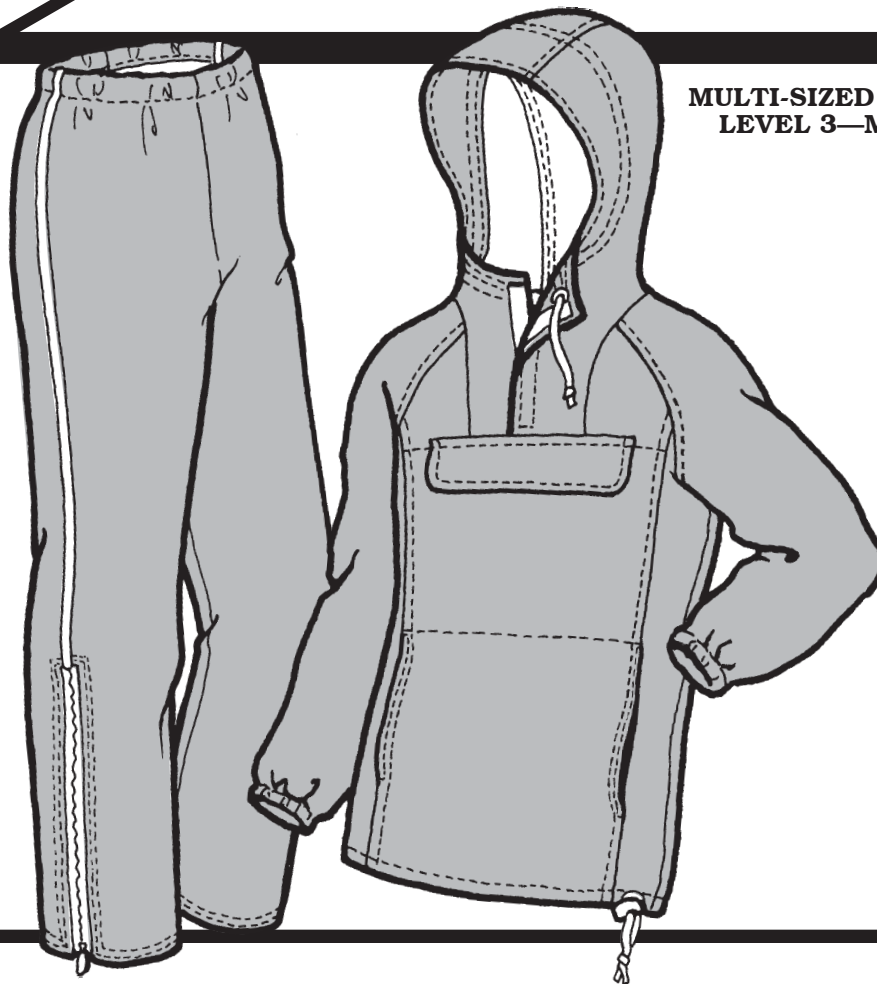


**WOMEN'S  
RAINIER WIND & RAIN SUIT**



**MULTI-SIZED PATTERN  
LEVEL 3—MEDIUM**

**MEASUREMENTS:**

**IMPORTANT:** When selecting pattern size, take measurements over clothing that will be worn under finished garment.

SIZE	6	8	10	12	14	16	18
Bust .....	30 <sup>1</sup> / <sub>2</sub> "	31 <sup>1</sup> / <sub>2</sub> "	32 <sup>1</sup> / <sub>2</sub> "	34"	36"	38"	40"
Waist .....	23"	24"	25"	26 <sup>1</sup> / <sub>2</sub> "	28"	30"	32"
Hip .....	31"	33 <sup>1</sup> / <sub>2</sub> "	34 <sup>1</sup> / <sub>2</sub> "	36"	38"	40"	42"
Back Waist Length	15 <sup>1</sup> / <sub>2</sub> "	15 <sup>3</sup> / <sub>4</sub> "	16"	16 <sup>1</sup> / <sub>4</sub> "	16 <sup>1</sup> / <sub>2</sub> "	16 <sup>3</sup> / <sub>4</sub> "	17"
Inseam Length .....	30"	30"	30"	30"	30"	30"	30"

**FABRIC:**

	6-14	16-18
<b>JACKET: Fabric</b> ..... 60"	2 <sup>3</sup> / <sub>8</sub> yd (2.2 m)	2 <sup>1</sup> / <sub>2</sub> yd (2.3 m)
.....45"	3 <sup>1</sup> / <sub>4</sub> yd (3.0 m)	3 <sup>3</sup> / <sub>8</sub> yd (3.1 m)
<b>Interfacing</b> .....	1/8 yd (.12 m)	1/8 yd (.12 m)
<b>PANTS: Fabric</b> .....60"	1 <sup>3</sup> / <sub>8</sub> yd (1.3 m)	2 <sup>1</sup> / <sub>4</sub> yd (2.1 m)
.....45"	2 <sup>1</sup> / <sub>2</sub> yd (2.3 m)	2 <sup>5</sup> / <sub>8</sub> yd (2.4 m)
<b>FULL SUIT: Fabric</b> .....60"	3 <sup>3</sup> / <sub>4</sub> yd (3.5 m)	3 <sup>7</sup> / <sub>8</sub> yd (3.6 m)
.....45"	4 <sup>7</sup> / <sub>8</sub> yd (4.5 m)	5 <sup>1</sup> / <sub>8</sub> yd (4.7 m)

**NOTIONS:**

1 ..... All-Polyester Thread

**JACKET:**

1 ..... 9" Non-Separating Zipper  
 1 pkg ..... 1/4" Grommets  
 3 yd (2.7 m) ..... 1/8" Cord  
 1 ..... Cord Toggle Lock  
 5/8 yd (.57 m) ..... 3/8" Elastic  
 1/3 yd (.3 m) ..... 3/4" Velcro

**PANTS:**

2 ..... 15" Non-Separating Zippers  
 1 yd (.92 m) ..... 1" Elastic  
 2 yd (1.8 m) ..... 1/16" Cord for Piping (optional)  
 1/8 yd (.12 m) ..... Fabric for Piping (optional)

**SUGGESTED FABRICS:**

Tightly-woven Lightweight Waterproof, Waterproof Breathable, or Water-Repellent Fabric.