

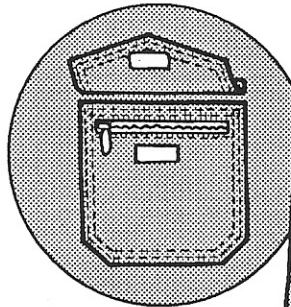
# SUNSET BAY CARGO SHORTS & ZIP-LEG PANTS

MULTI-SIZED for ADULTS  
LEVEL 3—MEDIUM

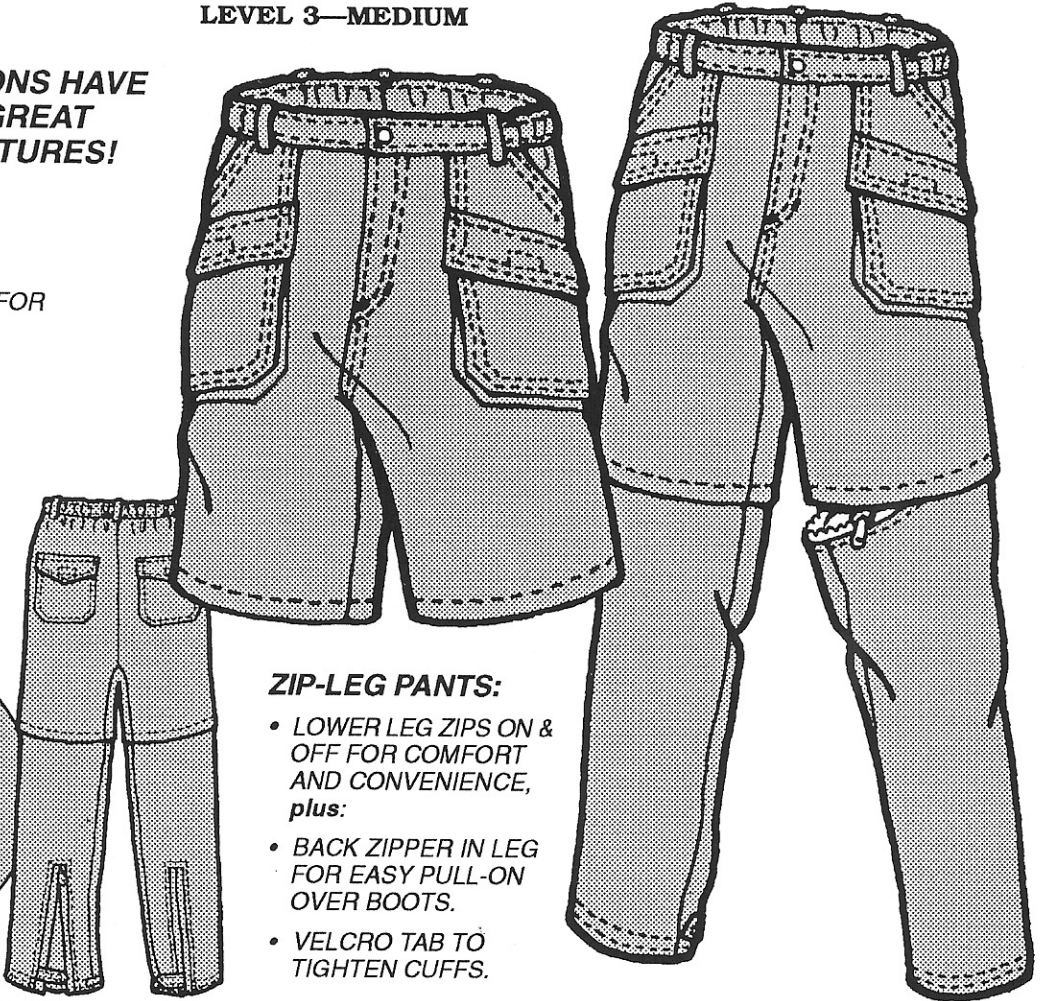
**BOTH OPTIONS HAVE THE SAME GREAT CARGO FEATURES!**

**CARGO SHORTS & ZIP-LEG PANTS:**

- INNER LEG GUSSET FOR COMFORT.
- TWO ROOMY CARGO POCKETS IN FRONT.
- LANYARD WITH KEY HOOK INSIDE FRONT POCKET.
- TWO BACK FLAP POCKETS WITH HIDDEN ZIPPER POCKETS INSIDE.



BACK VIEW



**ZIP-LEG PANTS:**

- LOWER LEG ZIPS ON & OFF FOR COMFORT AND CONVENIENCE, plus:
- BACK ZIPPER IN LEG FOR EASY PULL-ON OVER BOOTS.
- VELCRO TAB TO TIGHTEN CUFFS.

**MEASUREMENTS:** When selecting pattern size, measure over clothing that will be worn under finished garment.

SIZE	SMALL	MEDIUM	LARGE	X-LARGE	2X-LARGE	3X-LARGE
Waist	28-30" (71-76cm)	32-34" (81-86cm)	36-38" (91-97cm)	40-42" (102-107cm)	44-46" (112-117cm)	48-50" (122-127cm)
Hip	34-36" (86-91cm)	38-40" (97-102cm)	42-44" (107-112cm)	46-48" (117-122cm)	49-50" (124.5-127cm)	52-54" (132-137cm)
Inseam	32" (81 cm)	32" (81cm)	32" (81cm)	32" (81cm)	32" (81cm)	32" (81cm)

**FABRIC:**

60" Fabric –	S - XL	2XL - 3XL
Cargo Shorts .....	1 <sup>3</sup> / <sub>4</sub> yd (1.6 m)	1 <sup>7</sup> / <sub>8</sub> yd (1.7 m)
Zip-leg Pants .....	2 <sup>1</sup> / <sub>2</sub> yd (2.3 m)	2 <sup>3</sup> / <sub>4</sub> yd (2.5 m)

**NOTIONS:**

- 2 ..... 7" (18 cm) pocket zipper
- 2 ..... 9" (23 cm) non-separating zippers
- 1 ..... 7" (18 cm) non-separating zipper
- 7/8 yd (.8 m) ..... 1" (2.5 cm) firm elastic
- 1/2 yd (.46 m) ..... 3/4" (2 cm) velcro
- 2 ..... 1-way coil separating zippers:  
S-24" (61 cm), M to L-26" (66 cm),  
XL to 3XL-28" (71 cm)

**SUGGESTED FABRICS:**

Supplex or other water repellent fabric; or cotton twill, or denim.